

**State College Area School District
Office of Physical Plant
Ed Poprik, Director**

V-B

To: Board of School Directors

From: Ed Poprik

RE: **South Building Option Recommendation**

Date: December 2, 2013

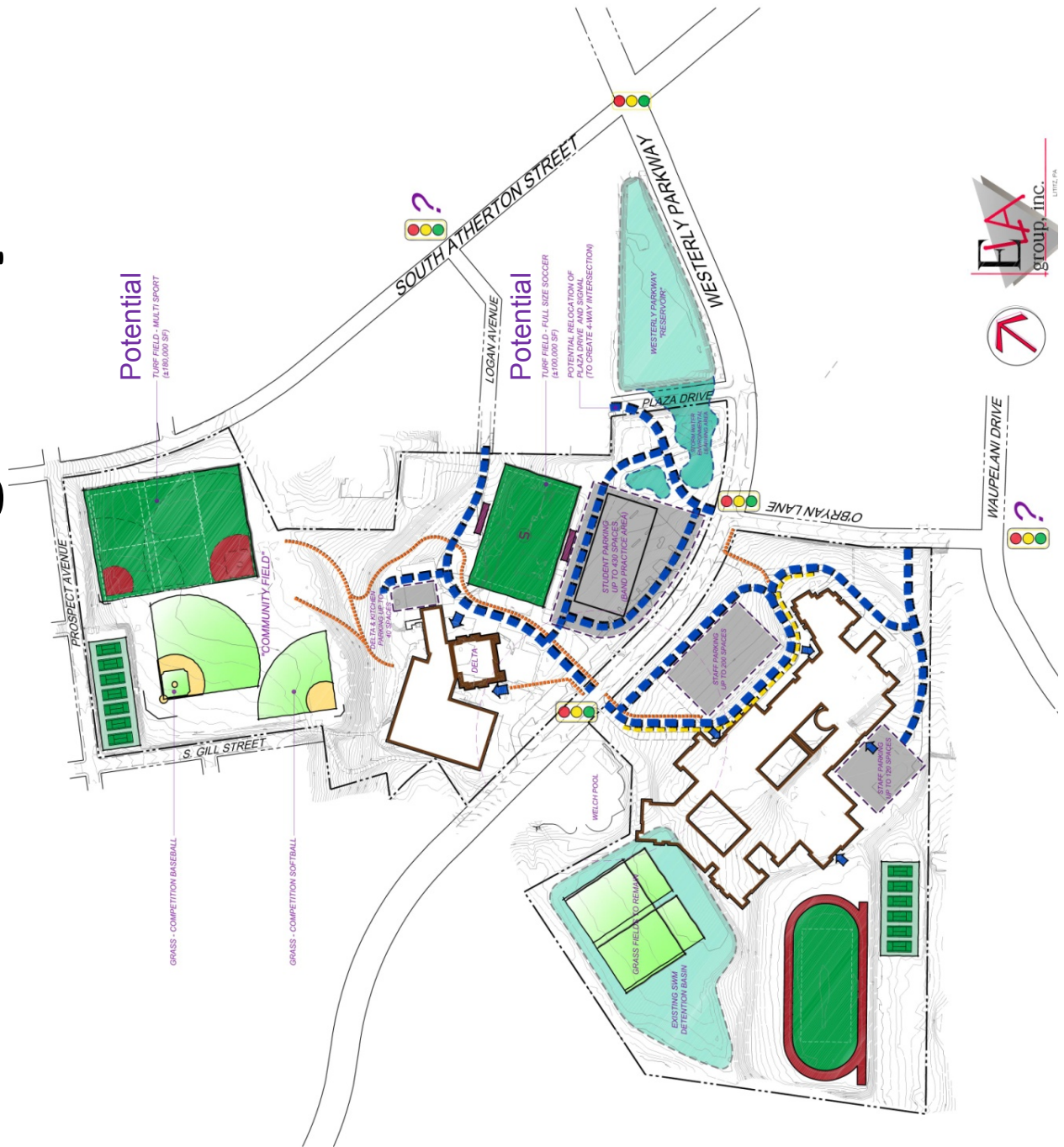
Recommend that the Board of School Directors select Option 2 as the preferred option for development of the State High project.

Background: On October 14 the Board received two preliminary State High design options for consideration. As development of these options advanced and details further defined, the design team advised the Board that Option 2 was more viable in terms of constructability and conformance to the Educational Model. Based on this assessment, preliminary modeling and further design development was completed for Option 2.

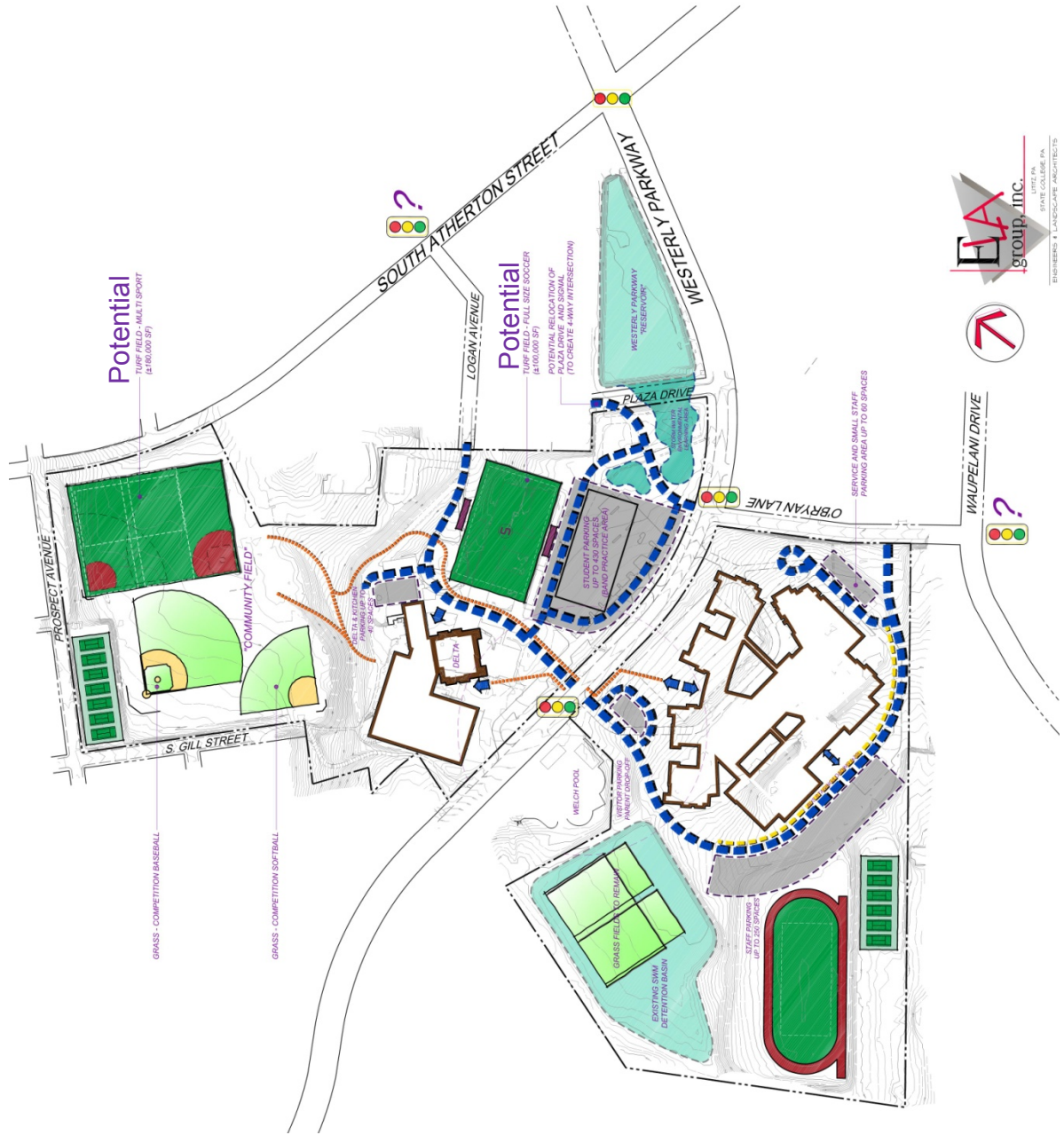
This action does not imply that development on Option 2 is complete; but rather, gives direction to the design team regarding development forward. The next step in the development process will be to complete an updated estimate for the project.

Attachments Site Option 1
 Site Option 2
 Site Option Comparison

State High - Option -1



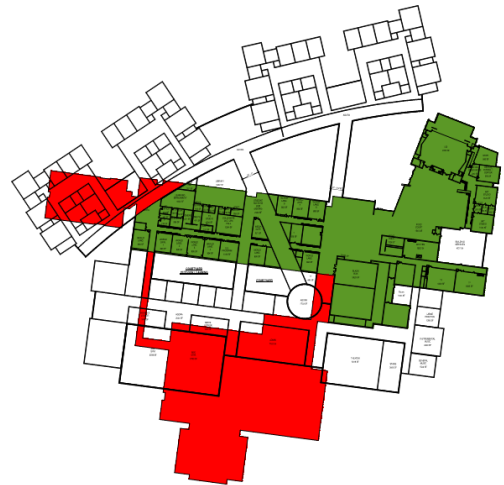
State High - Option -2



Option Characteristics



State High Option - 1



State High Option - 2

1. **Area of Demolition near equal.**
2. **Area of Renovation near equal.**
3. **Anticipate Option 2 will be more efficient.**