



**STATE COLLEGE AREA SCHOOL DISTRICT
ADMINISTRATIVE OFFICES**

131 WEST NITTANY AVENUE • STATE COLLEGE PENNSYLVANIA • 16801-4899
TELEPHONE: 814-231-1016 • FAX: 814-231-4130

To: Board of Directors
From: Bob O'Donnell
Re: Updated Detail for High School Project Calendar Discussion
Date: November 21, 2012

On November 12, 2012, our administrative team proposed a general calendar for the high school project leading to referendum during the 2013–2014 school year.

As a follow up to our November 12 discussion, I am including suggested procedures relating to “site options” for the November 26, 2012 board meeting. For other detailed items and processes outlined in the proposed calendar, we have planned a discussion with the contracted professionals to occur during a Board Work Session on December 17, 2012.

The refined high school project calendar has been proposed so that we update aspects of Phase II of the June 2009 District-Wide Facility Master Plan (DWFMP). Specifically, aspects that relate to the high school. Should the state’s PLANCON process (partial reimbursement to districts) be reinstated, we will be compliant with what needs to occur for the full master plan to be updated and for our district to qualify for state reimbursement.

Although we are not required to consider multiple locations for the high school project, we have proposed that the process considers more than one site due to the following rationale:

- We recommend gaining updated community feedback knowing that we are required to ask voting members of our community whether they would support a tax increase to fund this project.
- Our goal is to help the Board of Directors identify the best high school facility options that will fully support the educational program, and be fiscally responsible to our entire community.
- We propose updating the most supported options of the 2009 DWFMP. This process will incorporate much of the work done in 2008–2009 and attribute updated cost estimates to actual sites. Through doing so, we believe the expedited timeline will enable us to stay on track for the referendum, as outlined in the refined calendar.

Consequently, we propose that the Board of Directors, administration and architects collaborate to identify the most viable site option(s). The following variables should be considered as part of this inquiry: site location in comparison to student demographics, site size, land acquisition cost, and site development constraints (including topography,

infrastructure, traffic, zoning, etc.). Reasons for sites to be considered or eliminated from consideration should be discussed publicly.

After identifying the most viable option(s), Crabtree-Rohrbaugh Architects, Inc. and district administration will generate a report for the Board of Directors to consider:

- Estimate cost range per site
- Site pros and cons for implementing the educational program
- Site pros and cons relating to student experience

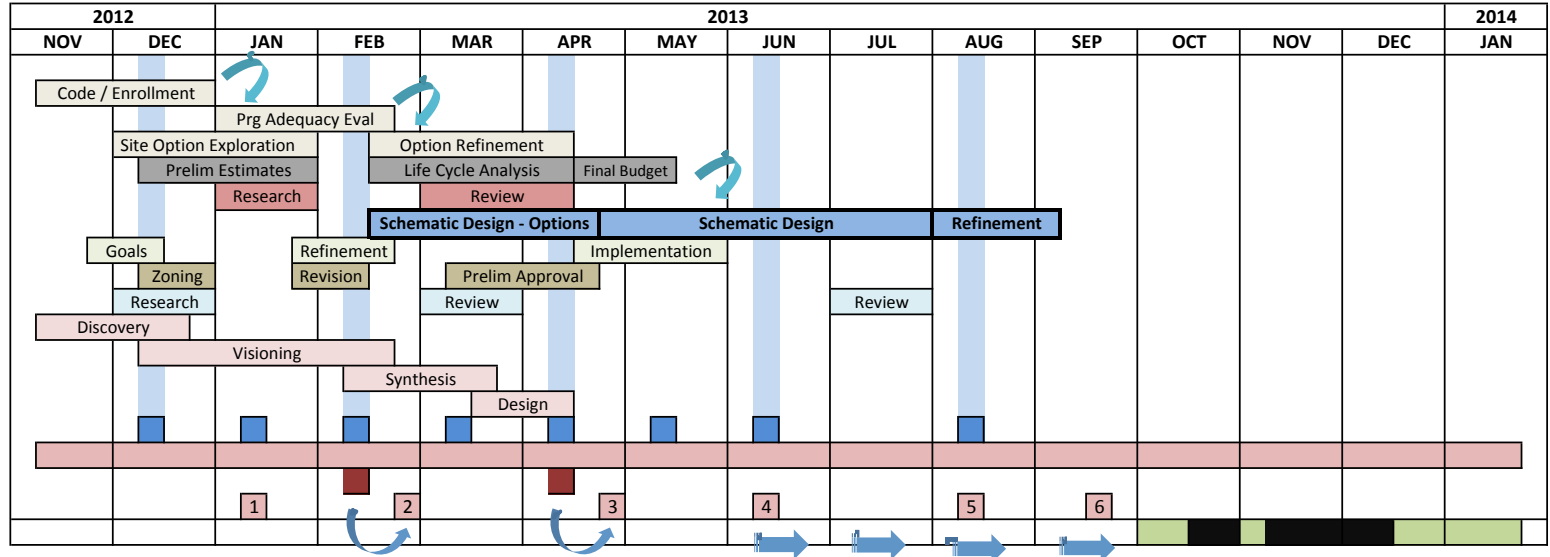
This report will enable the Board of Directors to determine whether to continue or end the study of site options. Should the Board direct the administration and architects to further the inquiry of more than one site at that time, then, the district would seek community feedback regarding the sites during the spring of 2013.

STATE COLLEGE AREA SCHOOL DISTRICT

PRELIMINARY HS PROJECT SCHEDULE TO REFERENDUM

26-Nov-12

Existing Facility and Site Analysis
High School option analysis
Budget Development
Demographic Analysis
Design
Sustainability
Land Development
Regulatory Agency
Educational Programming
Board Meetings and Work Sessions
Community Engagement
Community Surveys
Community Workshops
Referendum Vote



LEGEND

Existing Facility and Site Analysis / DWFMP

- Develop understanding of current use of space
- Identify program deficiencies / redundancies
- Identify all options / On-site / New site
- Identify Pros / Cons

Budget Development

- Discuss scope of Improvements
- Evaluate Building, Site and Operational Costs
- Preliminary Costs / Final Board Approved Budget

Design

- Preliminary Designs implementing Educational Program
- Identifies Building / Site Efficiency & Organization
- Establishes Preferred Option for Schematic Design

Sustainability

- Goal Setting / Opportunity Investigation
- Life Cycle Analysis of Systems
- Workshops & Conceptual Design
- Sustainability as a Teaching Tool

Land Development

- Define Buildable Areas
- Impact of Zoning / Setbacks / Traffic
- Establish scope of Municipal Improvements

Regulatory Agency

- Centre Regional Planning Input
- Identify All Municipal Requirements
- Develop Understanding of Schedule/Cost

Educational Programming

- Strategy Session
- Establish Guiding Principles of SCASD
- Define physical parameters to support Vision
- Synthesis of Input / Collaboration on Design

Board Meetings, Work Sessions*

- Establish Process for Information Exchange
- Schedule / Budget
- Decision / Approvals

Community Engagement

- Establish Community Engagement Action Team
- Facilitate Referendum Logistics
- Transparent / Comprehensive
- Community Surveys
- Community Workshops

* Preliminary Board Meeting and Work Shop Dates: Dec. 17, Jan. 21, Feb. 18, March 18, April 15, May 13, June 17