

STATE COLLEGE AREA SCHOOL DISTRICT

DISTRICT-WIDE FACILITY STUDY UPDATE
FOR PDE PLANCON SUBMITTAL

OCTOBER 27, 2014

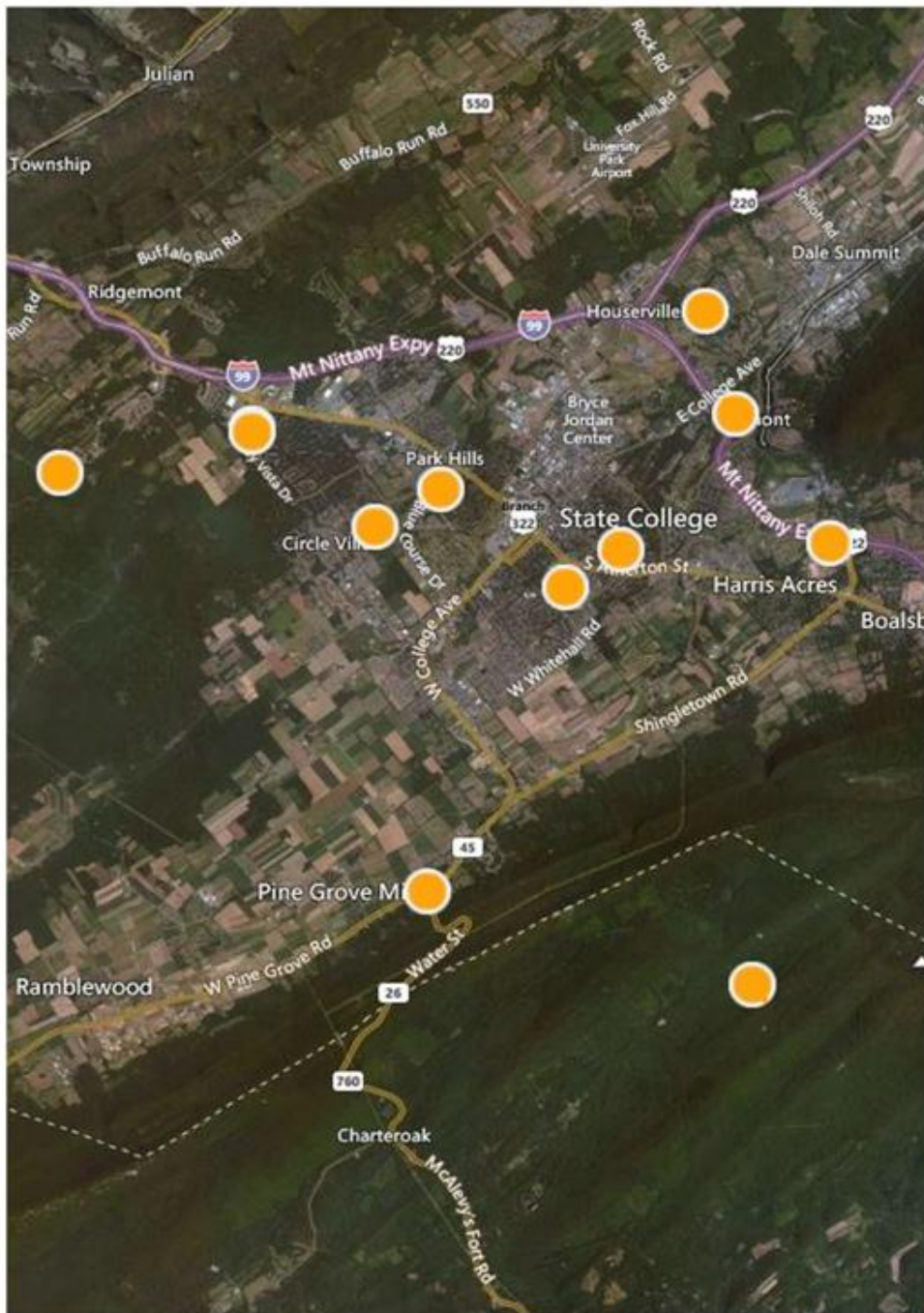


PDE requires a District-Wide Facility Study to be completed or updated prior to, and within two years of the Department's receipt of the PlanCon Part A "Project Justification" submission.

- 1** DISTRICT OVERVIEW
- 2** EDUCATIONAL PROGRAM
- 3** PROJECTED ENROLLMENT
- 4** STUDENT CAPACITY
- 5** BUILDING CONDITION ANALYSIS
- 6** ENERGY MODELING
- 7** IMPROVEMENTS
- 8** OPTIONS
- 9** STUDY AUTHOR

- 1** DISTRICT OVERVIEW
- 2 EDUCATIONAL PROGRAM
- 3 PROJECTED ENROLLMENT
- 4 STUDENT CAPACITY
- 5 BUILDING CONDITION ANALYSIS
- 6 ENERGY MODELING
- 7 IMPROVEMENTS
- 8 OPTIONS
- 9 STUDY AUTHOR

“An **overview of the school district** including such factors as **geography, population, and wealth**, including such factors as any **distinguishing characteristics** that will have an impact on facilities such as geographically separate population centers.”



DISTRICT SCHOOLS

ELEMENTARY SCHOOLS

- CORL STREET
- EASTERLY PARKWAY
- FERGUSON TOWNSHIP
- GRAY'S WOOD
- HOUSERVILLE
- LEMONT
- MOUNT NITTANY
- PARK FOREST

MIDDLE SCHOOLS

- MOUNT NITTANY
- PARK FOREST

HIGH SCHOOL

- STATE COLLEGE AREA HIGH SCHOOL



OVERVIEW

150 SQ. MILE ATTENDANCE AREA
RESIDENT POPULATION 86,108
2013-14 ENROLLMENT: 2,744 PUPILS

MUNICIPALITIES

BOROUGH OF STATE COLLEGE
COLLEGE TOWNSHIP
FERGUSON TOWNSHIP
HALFMOON TOWNSHIP
HARRIS TOWNSHIP
PATTON TOWNSHIP

1930's Violin Class (top)

Photo donated by May Frankenberger

- 1 DISTRICT OVERVIEW
- 2 EDUCATIONAL PROGRAM
- 3 PROJECTED ENROLLMENT
- 4 STUDENT CAPACITY
- 5 BUILDING CONDITION ANALYSIS
- 6 ENERGY MODELING
- 7 IMPROVEMENTS
- 8 OPTIONS
- 9 STUDY AUTHOR

“An overview of the school district’s **educational program** that highlights any **special facility needs** including any **institutional practices or planned curriculums** that will require **special design features.**”



ELEMENTARY (K-5)

9 SCHOOLS

FULL DAY KINDERGARTEN

MIDDLE SCHOOL (6-8)

2 SCHOOLS

INTRODUCED TO FAMILY AND
CONSUMER SCIENCES, TECHNOLOGY
EDUCATION, FOREIGN LANGUAGES,
ESL

7th Annual "New faces of an Ancient People Traditional
American Indian Powwow"

Mount Nittany Middle School, April 10 & 11th



HIGH SCHOOL (9-12)

1 SCHOOL, 2 BUILDINGS

COURSES IN ACADEMIC,

VOCATIONAL, BUSINESS,
AND AGRICULTURAL AREAS

DISTRICT-WIDE PROGRAMS

COMPUTER TECHNOLOGY

SPECIAL EDUCATION

LEARNING ENRICHMENT PROGRAM

EXTRACURRICULAR ACTIVITIES

COMMUNITY EDUCATION PROGRAM

Marla Yukelson (bottom)

LifeLink PSU Program Coordinator, Special Education Teacher SCASD

SPACE CATEGORY	Net Area Sub-Total (sq. ft.)
1.0 9th GRADE LEARNING COMMUNITY	
1.01 Core Learning & Support	13,800
1.02 9th Grade Science	6,100
1.03 Student Commons	2,700
1.04 Staff Support	2,240
Sub-Total:	24,840
2.0 ARTS & HUMANITIES LC	
2.01 Core Learning & Support	12,100
2.02 Science	6,100
2.03 Student Commons	2,700
2.04 Staff Support	2,240
Sub-Total:	23,140
3.0 BUSINESS & COMMUNICATONS LC	
3.01 Core Learning & Support	12,100
3.02 Science	6,100
3.03 Business & Management	5,000
3.04 Student Commons	2,700
3.05 Staff Support	2,240
Sub-Total:	28,140
4.0 HEALTH & HUMAN SERVICES LC	
4.01 Core Learning & Support	12,100
4.02 Science	6,100
4.03 Applied Labs & Support	10,120
4.04 Student Commons	2,700
4.05 Staff Support	2,240
Sub-Total:	33,260
5.0 S.T.E.M. LEARNING COMMUNITY	
5.01 Core Learning & Support	12,100
5.02 Science	6,100
5.03 Tech Ed	5,200
5.04 CTC	15,600
5.05 Student Commons & Support	4,800
5.06 Staff Support	3,520
Sub-Total:	47,320
6.0 SPECIALTY PROGRAMS	
6.01 World Languages	10,700
6.02 Special Education	5,150
6.03 ELL Program	900
Sub-Total:	16,750

SPACE CATEGORY	Net Area Sub-Total (sq. ft.)
7.0 VISUAL & PERFORMING ARTS	
7.01 Visual Arts	4,800
7.02 Performing Arts: Music	7,600
7.03 Performing Arts: Theater	16,900
Sub-Total:	29,300
8.0 LIBRARY, LE & TECHNOLOGY	
8.01 Library/Media Resources	10,000
8.02 Learning Enrichment	3,600
8.03 TE/Media Communications	1,200
8.04 Technology Support	1,800
Sub-Total:	16,600
9.0 PHYS ED, HEALTH & ATHLETICS	
9.01 Physical Instruction	56,400
9.02 PE/Athletics: Support	19,800
9.03 PE/Athletics: Amenities	1,600
Sub-Total:	77,800
10.0 ADMIN & STUDENT SERVICES	
10.01 Administration	5,600
10.02 Student Services	3,450
10.03 Health Office	600
Sub-Total:	9,650
11.0 STUDENT COMMONS / DINING	
11.01 Dining Commons	16,900
11.02 Kitchen & Served	7,500
Sub-Total:	24,400
12.0 BUILDING SERVICES	
12.01 Custodial Support	2,800
12.02 Building Services	2,000
Sub-Total:	4,800
13.0 DELTA PROGRAM	
13.01 Delta Program	12,200
13.02 Delta Support Spaces	1,800
Sub-Total:	14,000

- 1 DISTRICT OVERVIEW
- 2 EDUCATIONAL PROGRAM
- 3 PROJECTED ENROLLMENT**
- 4 STUDENT CAPACITY
- 5 BUILDING CONDITION ANALYSIS
- 6 ENERGY MODELING
- 7 IMPROVEMENTS
- 8 OPTIONS
- 9 STUDY AUTHOR

“An analysis of **projected enrollment** [and a] **review** as to whether projections **5 to 10 years** into the future are **reasonable and reliable**. [Also include] the likely enrollment for each building and for **each grade structure**.”

Table 17

**State College Area School District Forecasts per Grade:
2013-2022 Fertility/Aging/Embedded Growth Scenario
[Scenario I]***

	K	G1	G2	G3	G4	G5	G6	Total K→G6	G7	G8	Total G7→G8	G9	G10	G11	G12	Ungraded	Total G9→G12	Total K → G12
2012	443	510	502	502	524	496	521	3498	517	510	1027	577	612	602	578	24	2393	6918
2013	434	485	510	506	510	522	514	3481	529	537	1066	555	579	606	590	24	2354	6897
2014	443	475	485	514	514	508	541	3480	522	549	1071	585	557	574	594	24	2334	6881
2015	480	485	475	489	522	512	526	3489	550	542	1092	598	587	552	563	24	2324	6901
2016	439	526	485	479	496	520	530	3475	534	571	1105	590	600	582	541	24	2337	6913
2017	451	481	526	489	486	495	539	3467	538	554	1092	622	592	595	570	24	2403	6962
2018	451	493	481	530	496	485	513	3449	548	558	1106	603	624	587	583	24	2421	6976
2019	451	493	493	485	538	495	502	3457	521	569	1090	608	605	618	575	24	2430	6977
2020	451	493	493	497	492	536	513	3475	510	541	1051	620	610	600	606	24	2460	6986
2021	451	493	493	497	504	491	555	3484	521	529	1050	589	622	605	588	24	2428	6962
2022	451	493	493	497	504	502	509	3449	564	541	1105	576	591	616	593	24	2400	6954

	2012	2017	2022	Δ2017-2012	Δ2022-2017	Δ2022-2012
K→G6	3498	3467	3449	-31	-18	-49 (-1%)
G7→G8	1027	1092	1105	+65	+13	+78 (+8%)
G9→G12	2393	2403	2400	+10	-3	+7 (0%)
Total	6918	6962	6954	+44	-8	+36 (+1%)

Building	Grades	2012-13 Enrollment
ELEMENTARY SCHOOLS		
Corl Street Elementary School	K - 5	253
Easterly Parkway Elementary School	K - 5	344
Ferguson Township Elementary School	K - 5	375
Gray's Wood Elementary School	K - 5	388
Houserville Elementary School	K - 5	176
Lemont Elementary School		167
Mount Nittany Elementary School	K - 5	321
Park Forest Elementary School	K - 5	478
Radio Park Elementary School	K - 5	372
		2,874
<i>Current Enrollment plus 10%</i>		3,161
<i>Highest Projected Enrollment (Stewman)</i>	year 2017	2,940
MIDDLE SCHOOLS		
Mt. Nittany Middle School	6 - 8	727
Park Forest Middle School	6 - 8	826
		1,553
<i>Current Enrollment plus 10%</i>		1,708
<i>Highest Projected Enrollment (Stewman)</i>	year 2022	1,622
HIGH SCHOOLS		
State College Area High School - South	9 - 10	1,095
State College Area High School - North	11 - 12	1,088
		2,183
<i>Current Enrollment plus 10%</i>		2,401
<i>Highest Projected Enrollment (Stewman)</i>	year 2020	2,403

Building	Grades	2014-15 Enrollment	Student Capacity	Enrollment to Capacity Ratio
<i>ELEMENTARY SCHOOLS</i>				
Corl Street Elementary School	K - 5	253	325	78%
Easterly Parkway Elementary School	K - 5	344	450	76%
Ferguson Township Elementary School	K - 5	375	450	83%
Gray's Wood Elementary School	K - 5	388	550	71%



ELEMENTARY (K-5)

CURRENT: 2,874

HIGHEST PROJECTED (2017): 2,940

MIDDLE SCHOOL (6-8)

CURRENT: 1,553

HIGHEST PROJECTED (2022): 1,622

HIGH SCHOOL (9-12)

CURRENT: 2,183

HIGHEST PROJECTED (2020): 2,403



- 1 DISTRICT OVERVIEW
- 2 EDUCATIONAL PROGRAM
- 3 PROJECTED ENROLLMENT
- 4 STUDENT CAPACITY**
- 5 BUILDING CONDITION ANALYSIS
- 6 ENERGY MODELING
- 7 IMPROVEMENTS
- 8 OPTIONS
- 9 STUDY AUTHOR

“An analysis of each building’s **capacity** as it relates to the educational program including, not only how many **students** can a building house, but if each building provides the types of **educational spaces dictated** by the educational program.”

ELEMENTARY BUILDING CAPACITY					
District/CTC: STATE COLLEGE AREA			Project Name: MT. NITTANY		
		SCHOOL: CORL STREET			
		PRESENT		PLANNED	
#1	#2	#3	#4	#5	#6
NAME OF SPACE	UNIT CAP	NO. OF UNITS	TOTAL FTE	NO. OF UNITS	TOTAL FTE
HALF-TIME KINDRGRTN	50				
FULL-TIME KINDRGRTN	25	1	25	1	25
REG CLSRM 660+ SQ FT	25	12	300	12	300
NATATORIUM	XX		XXXXXX		XXXXXX
BUILDING TOTAL	XX	XXXXXX	325	XXXXXX	325
		SCHOOL: LEMONT ELEM			

Building	Grades	2013-14 Enrollment	Student Capacity	Enrollment to Capacity Ratio
ELEMENTARY SCHOOLS				
Corl Street Elementary School	K - 5	253	325	78%
Easterly Parkway Elementary School	K - 5	344	450	76%
Ferguson Township Elementary School	K - 5	375	450	83%
Gray's Wood Elementary School	K - 5	388	550	71%
Houserville Elementary School	K - 5	176	300	59%
Lemont Elementary School		167	300	56%
Mount Nittany Elementary School	K - 5	321	450	71%
Park Forest Elementary School	K - 5	478	525	91%
Radio Park Elementary School	K - 5	372	450	83%
		2,874	3,800	76%
<i>Current Enrollment plus 10%</i>		3,161		83%
<i>Highest Projected Enrollment (Stewman)</i>	year 2022	2,967		78%
MIDDLE SCHOOLS				
Mt. Nittany Middle School	6 - 8	727	1,076	68%
Park Forest Middle School	6 - 8	826	1,094	76%
		1,553	2,170	72%
<i>Current Enrollment plus 10%</i>		1,708		79%
<i>Highest Projected Enrollment (Stewman)</i>	year 2022	1,614		74%
HIGH SCHOOLS				
State College Area High School - South	9 - 10	1,095	1,333	82%
State College Area High School - North	11 - 12	1,088	1,498	73%
		2,183	2,831	77%
<i>Current Enrollment plus 10%</i>		2,401		85%
<i>Highest Projected Enrollment (Stewman)</i>	year 2020	2,455		

Building	Grades	2013-14 Enrollment	Student Capacity	Enrollment to Capacity Ratio
<i>ELEMENTARY SCHOOLS</i>				
Corl Street Elementary School	K - 5	253	325	78%
Easterly Parkway Elementary School	K - 5	344	450	76%
Ferguson Township Elementary School	K - 5	375	450	83%
Gray's Wood Elementary School	K - 5	388	550	71%



ELEMENTARY (K-5)

CURRENT CAPACITY: 2,874

ENROLLMENT/ CAPACITY: 76%

MIDDLE SCHOOL (6-8)

CURRENT CAPACITY: 1,553

ENROLLMENT/ CAPACITY: 72%

HIGH SCHOOL (9-12)

CURRENT CAPACITY: 2,183

ENROLLMENT/ CAPACITY: 77%



- 1 DISTRICT OVERVIEW
- 2 EDUCATIONAL PROGRAM
- 3 PROJECTED ENROLLMENT
- 4 STUDENT CAPACITY
- 5 BUILDING CONDITION ANALYSIS**
- 6 ENERGY MODELING
- 7 IMPROVEMENTS
- 8 OPTIONS
- 9 STUDY AUTHOR

“An analysis of each building’s **physical condition including the **condition** and projected **useful life** of each building’s major components (HVAC, plumbing, etc), any **code violations**, whether the building is **accessible**, **structurally sound**, and **energy efficient**.”**



ANALYSIS OF

MECHANICAL SYSTEMS

ELECTRICAL SYSTEMS

PLUMBING SYSTEMS

ARCHITECTURAL COMPONENTS

EDUCATIONAL SPACES

RATINGS

0%	General Maintenance
10%	Minor
50%	Moderate
75%	Major
100%	Replace

					2008	2014	
Building	Site Acres	Square Feet	Year Built	Year of Improvements	Condition Rating see chart below	Condition Rating see chart below	Improvement Level
ELEMENTARY SCHOOLS							
Corl Street Elementary School	4.7	27,780	1952	1961, 1996	56%	66%	Moderate to major
Easterly Parkway Elementary School	11.4	55,895	1961	2002	0%	10%	Minor
Ferguson Township Elementary School	9.2	64,500	1931	2011	0%	5%	Maintenance
Gray's Wood Elementary School	15	56,795	2002	2011	0%	5%	Maintenance
Houserville Elementary School	55	36,952	1959	1968	62%	72%	Moderate to major
Lemont Elementary School	6.8	28,142	1939	1966	56%	66%	Moderate to major
Mount Nittany Elementary School	40	59,946	2011		0%	5%	Maintenance
Park Forest Elementary School	25	62,326	2005		0%	10%	Minor
Radio Park Elementary School	26	56,697	1963		69%	79%	Moderate to major
MIDDLE SCHOOLS							
Mt. Nittany Middle School	40	155,500	1995		9%	19%	Minor
Park Forest Middle School	55	150,317	1971	1995	29%	39%	Minor
HIGH SCHOOLS							
State College Area High School - South	38	191,280	1962	1965, 2000	57%	See separate report	
State College Area High School - North	42	258,398	1955	65, 89, 2000	59%	See separate report	
DELTA							
Fairmont Building	1.1	88,978	1914	1921,'31,'42	76%	86%	Major
Delta Middle School							
Delta High School							
ADMINISTRATIVE							
District Administration Office	0.5	15,585	1924		61%	71%	
Panorama Village	15.6	36,952	1959	1968	63%	73%	Major
Bus Garage		5,176	1973				
Maintenance Storage		7,200	1980				
FIELDS							
Memorial Field			1937	2013		Renovated in 2014	
Community Field			1937				
OTHER							
Boalsburg Elementary School					Sold to St. Joseph's Catholic Academy		
College Heights					Planned to be sold to Penn State		

Ratings	
0%	General Maintenance
10%	Minor
50%	Moderate
75%	Major
100%	Replace

Ratings	
0%	General Maintenance
10%	Minor
50%	Moderate
75%	Major
100%	Replace

					2008	2014	
Building	Site Acres	Square Feet	Year Built	Year of Improvements	Condition Rating see chart below	Condition Rating see chart below	Improvement Level
ELEMENTARY SCHOOLS							
Corl Street Elementary School	4.7	27,780	1952	1961, 1996	56%	66%	Moderate to major
Easterly Parkway Elementary School	11.4	55,895	1961	2002	0%	10%	Minor
Ferguson Township Elementary School	9.2	64,500	1931	2011	0%	5%	Maintenance
Gray's Wood Elementary School	15	56,795	2002	2011	0%	5%	Maintenance



FERGUSON TOWNSHIP E.S.

ESTIMATED LIFECYCLE

BOILERS – 28 YEARS

PUMPS – 18 YEARS

DUCTWORK – 28 YEARS

ROOFTOP UNITS – 12 YEARS

COILS – 18 YEARS

ELECTRONIC CONTROLS – 13 YEARS

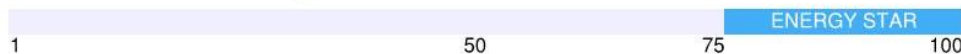
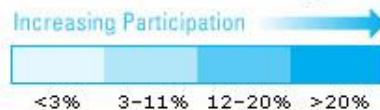
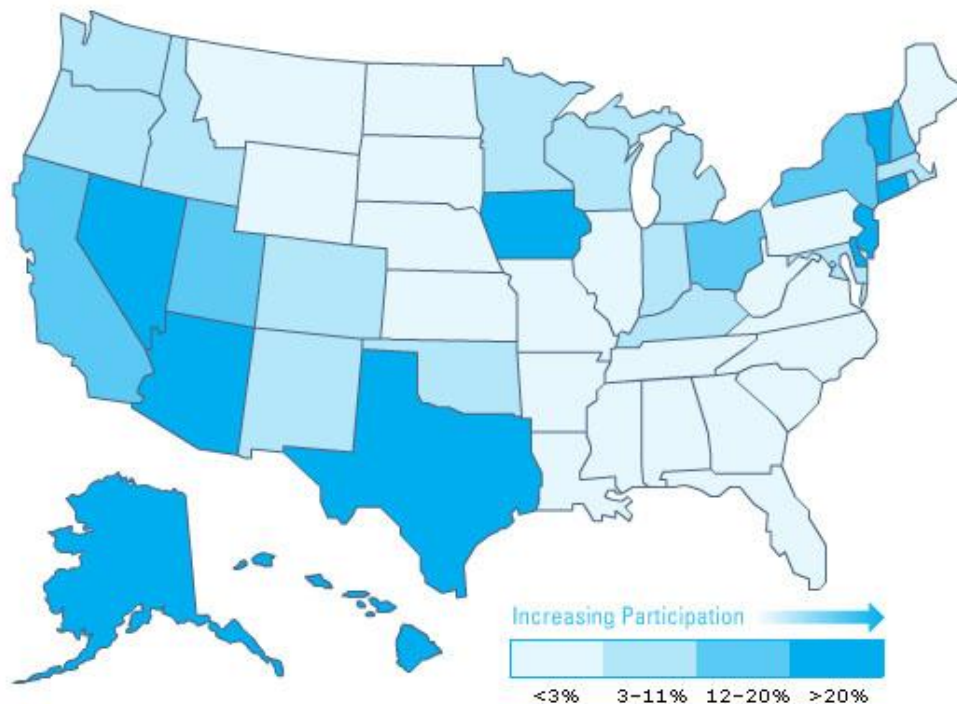
PNEUMATIC CONTROLS – 18 YEARS

ENERGY EFFICIENCY

ENERGY STAR RATING - 91 OF 100

- 1 DISTRICT OVERVIEW
- 2 EDUCATIONAL PROGRAM
- 3 PROJECTED ENROLLMENT
- 4 STUDENT CAPACITY
- 5 BUILDING CONDITION ANALYSIS
- 6 ENERGY MODELING**
- 7 IMPROVEMENTS
- 8 OPTIONS
- 9 STUDY AUTHOR

“An Energy Portfolio Survey, including facility benchmarking, completed using the EPA / DOE Portfolio manager tool.”



Buildings with a score of 75 or higher may qualify for EPA's ENERGY STAR.

ENERGY STAR COMPARES THE PERFORMANCE OF YOUR BUILDING TO THE PERFORMANCE OF A NATIONAL DATABASE OF SIMILAR BUILDINGS.

SUMMARY OF SCORES OF EXISTING SCHOOLS IN STUDY.

Building	Grades	Square Feet	Year Built	Year of Improvements	ENERGY STAR SCORES
ELEMENTARY SCHOOLS					
Corl Street Elementary School	K - 5	27,780	1952	1961, 1996	30
Easterly Parkway Elementary School	K - 5	55,895	1961	2002	78
Ferguson Township Elementary School	K - 5	64,500	1931	2011	91
Gray's Wood Elementary School	K - 5	56,795	2002	2011	92
Houserville Elementary School	K - 5	36,952	1959	1968	56
Lemont Elementary School		28,142	1939	1966	80
Mount Nittany Elementary School	K - 5	59,946	2011		95
Park Forest Elementary School	K - 5	62,326	2005		86
Radio Park Elementary School	K - 5	56,697	1963		85
Current Enrollment plus 10%					
Highest Projected Enrollment (Stewman) year 2022					
MIDDLE SCHOOLS					
Mt. Nittany Middle School	6 - 8	155,500	1995		74
Park Forest Middle School	6 - 8	150,317	1971	1995	75
Current Enrollment plus 10%					
Highest Projected Enrollment (Stewman) year 2022					
HIGH SCHOOLS					
State College Area High School - South	9 - 10	191,280	1962	1965, 2000	73
State College Area High School - North	11 - 12	258,398	1955	65, 89, 2000	41
Current Enrollment plus 10%					
Highest Projected Enrollment (Stewman) year 2022					
DELTA					
Fairmont Building		88,978	1914	1921,'31,'42	65
ADMINISTRATIVE					
District Administration Office		15,585	1924		68
Panorama Village		36,952	1959	1968	63
Bus Garage		5,176	1973		
Maintenance Storage		7,200	1980		

Building	Grades	Square Feet	Year Built	Year of Improvements	ENERGY STAR SCORES
<i>ELEMENTARY SCHOOLS</i>					
Corl Street Elementary School	K - 5	27,780	1952	1961, 1996	30
Easterly Parkway Elementary School	K - 5	55,895	1961	2002	78
Ferguson Township Elementary School	K - 5	64,500	1931	2011	91
Gray's Wood Elementary School	K - 5	56,795	2002	2011	92

- 1 DISTRICT OVERVIEW
- 2 EDUCATIONAL PROGRAM
- 3 PROJECTED ENROLLMENT
- 4 STUDENT CAPACITY
- 5 BUILDING CONDITION ANALYSIS
- 6 ENERGY MODELING
- 7 IMPROVEMENTS**
- 8 OPTIONS
- 9 STUDY AUTHOR

“Improvements and costs to upgrade each building to current standards.”

Building	Square Feet	Year Built	Year of Improvements	Age of Improvements (years)	Condition Rating see chart below	Improvement Level	Improvement Cost Potential Cost per SF	Total Project Cost Potential includes 20% Soft Cost and 10% Site Allowance
ELEMENTARY SCHOOLS				2014				
Corl Street	27,780	1952	1961, 1996	18	66%	Moderate to major	\$ 125	\$ 4,514,250
Easterly Parkway	55,895	1961	2002	12	5%	Minor	\$ 10	\$ 726,635
Ferguson Township	64,500	1931	2011	3	5%	Maintenance	Maintain	
Gray's Woods	56,795	2002	2011	3	5%	Maintenance	Maintain	
Houserville	36,952	1959	1968	46	72%	Moderate to major	\$ 130	\$ 6,244,888
Lemont	28,142	1939	1966	48	66%	Moderate to major	\$ 130	\$ 4,755,998
Mount Nittany	59,946	2011		3	5%	Maintenance	Maintain	
Park Forest	62,326	2005		9	5%	Maintenance	Maintain	
Radio Park	56,697	1963		51	79%	Moderate to major	\$ 130	\$ 9,581,793
								Total Project Cost Potential includes 20% Soft Cost
MIDDLE SCHOOLS								
Mt. Nittany MS	155,500	1995		19	19%	Minor	\$ 10	\$ 1,866,000
Park Forest MS	150,317	1971	1995	19	39%	Minor	\$ 20	\$ 3,607,608
HIGH SCHOOLS								
High School - South	191,280	1962	1965, 2000				See Section 7 Options	
High School - North	258,398	1955	65, 89, 2000					
Fairmont Building	88,978	1914	1921,'31,'42	72	86%	Major	See Section 7 Options	
ADMINISTRATIVE								
District Admin. Office	15,585	1924			71%	Major	See Section 7 Options	
Panorama Village	36,952	1959	1968		73%	Major		
Bus Garage	5,176	1973						
Maintenance Storage	7,200	1980						
FIELDS								
Memorial Field		1937	2013		Renovated in 2014			
Community Field		1937					See Section 7 Options	

Ratings	
0%	General Maintenance
10%	Minor
50%	Moderate
75%	Major
100%	Replace

Ratings	
0%	General Maintenance
10%	Minor
50%	Moderate
75%	Major
100%	Replace

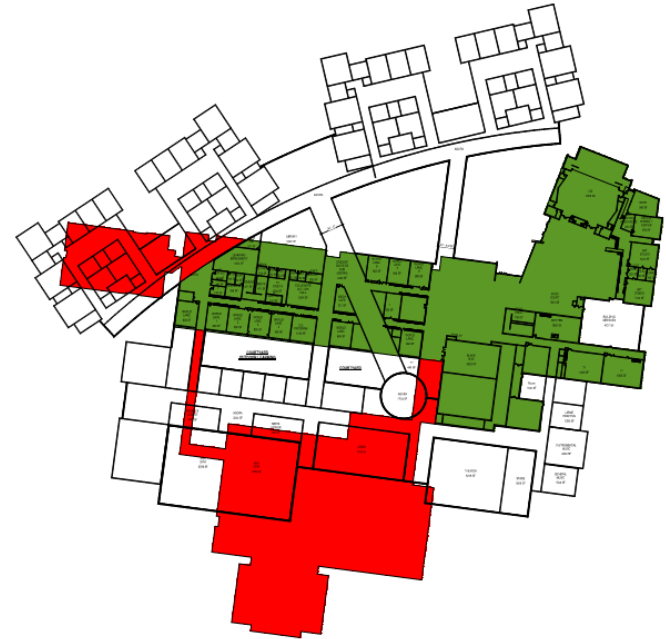
Building	Square Feet	Year Built	Year of Improvements	Age of Improvements (years)	Condition Rating see chart below	Improvement Level	Improvement Cost Potential Cost per SF	Total Project Cost Potential includes 20% Soft Cost and 10% Site Allowance
ELEMENTARY SCHOOLS				2014				
Corl Street	27,780	1952	1961, 1996	18	66%	Moderate to major	\$ 125	\$ 4,514,250
Easterly Parkway	55,895	1961	2002	12	5%	Minor	\$ 10	\$ 726,635
Ferguson Township	64,500	1931	2011	3	5%	Maintenance	Maintain	
Gray's Woods	56,795	2002	2011	3	5%	Maintenance	Maintain	

- 1 DISTRICT OVERVIEW
- 2 EDUCATIONAL PROGRAM
- 3 PROJECTED ENROLLMENT
- 4 STUDENT CAPACITY
- 5 BUILDING CONDITION ANALYSIS
- 6 ENERGY MODELING
- 7 IMPROVEMENTS
- 8 OPTIONS**
- 9 STUDY AUTHOR

“An analysis of construction **options** including the **pros** and **cons** of each alternate [and] **cost estimates** for each option.”



SOUTH - OPTION 1



SOUTH - OPTION 2

Option	Basic Description	Location	Building Area		Building & Site		Soft Cost		Subtotal	Preliminary Cost Range
1	Add/Renov 9-10	Westerly South	264,400	SF	\$ 45.8	M	\$ 9.6	M	\$ 55.4	
	Add/Renov 11-12	Westerly North	271,000	SF	\$ 47.4	M	\$ 9.9	M	\$ 57.3	Total Range for Option B
			535,400	SF					\$112.7 M	\$ 109.9 M \$ 115.5 M
2	Add/Renov 9-12	Westerly South	458,790	SF	\$ 80.3	M	\$ 16.8	M	\$ 97.1	
	Partial Renov North	Westerly North	83,040	SF	\$ 12.2	M	\$ 2.6	M	\$ 14.8	Total Range for Option D2
			541,830	SF					\$111.9 M	\$ 109.1 M \$ 114.7 M



OPTIONS

NORTH & SOUTH HIGH SCHOOLS
ADDITIONS & RENOVATIONS

CENTRAL OFFICE
ADMINISTRATIVE FUNCTIONS

FAIRMONT BUILDING
ADMINISTRATIVE FUNCTIONS

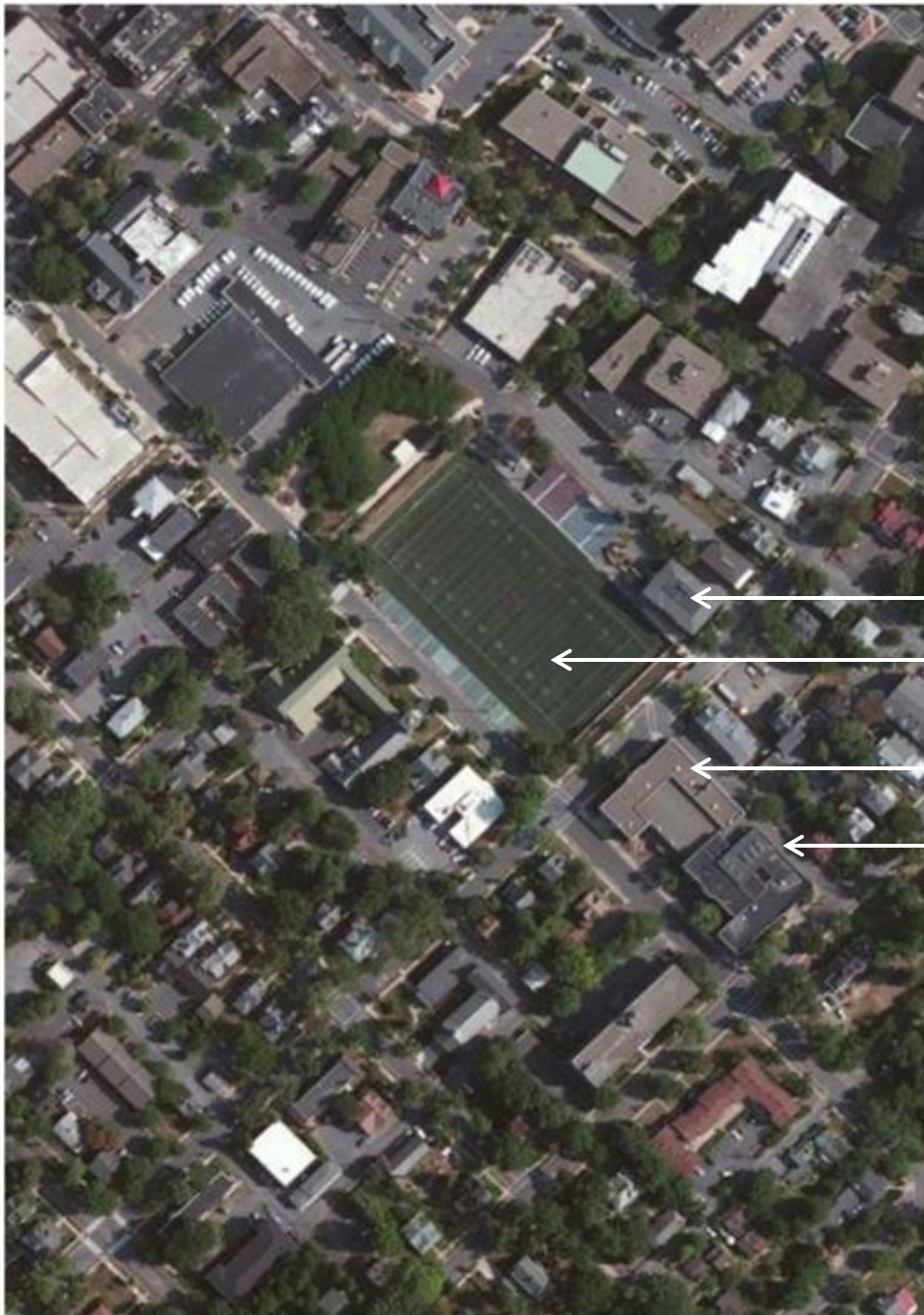
PANORAMA VILLAGE SCHOOL
ADMINISTRATIVE FUNCTIONS

MEMORIAL FIELD
LOCKER ROOMS & PUBLIC
RESTROOMS

HIGH SCHOOL/ COMMUNITY FIELD
PLAYFIELDS

FIELD LIGHTING

MIDDLE SCHOOL TRACK
PARK FOREST & NITTANY M.S.



— CENTRAL OFFICE

— MEMORIAL FIELD

— W. NITTANY SIDE OF BUILDING

— FAIRMONT AVE. SIDE OF BUILDING



- 1 DISTRICT OVERVIEW
- 2 EDUCATIONAL PROGRAM
- 3 PROJECTED ENROLLMENT
- 4 STUDENT CAPACITY
- 5 BUILDING CONDITION ANALYSIS
- 6 ENERGY MODELING
- 7 IMPROVEMENTS
- 8 OPTIONS
- 9 STUDY AUTHOR**

“Documentation regarding the **author’s credentials** including education, registration or licensure, and experience qualifying the authors to perform the study.”

CONTRIBUTORS INCLUDE

Crabtree, Rohrbaugh & Associates

BrainSpaces, Inc.

Dr. Willam DeJong

Shelby Stewman

SCASD Website

DOE Energy Star Program

PA Department of Education

QUESTIONS?