



State College Area School District

Randy Brown

Finance and Operations Officer

240 VILLA CREST DRIVE • STATE COLLEGE, PENNSYLVANIA • 16801

TELEPHONE: 814-231-1021 • FAX: 814-466-6068

To: Facilities and Grounds Committee
 From: Danielle Yoder and Randy Brown
 Subject: Facility and Attendance Boundary Analysis
 Date: June 2, 2023

This presentation related to our facility and attendance boundary analysis serves several purposes. First, to build on and reinforce the initial look at student enrollment presented by our consultant, Crabtree, Rohrbaugh and Associates Architects (CRA). Second, review changes in instructional needs impacting facility use. Third, serve as the introduction of recommendation for facilities renovations including a timeline for further discussion and evaluation, including community input, and future action steps.

CRA presented initial district enrollment data to the [facilities and grounds committee on November 2, 2022](#). From that presentation, elementary enrollment in total is expected to remain fairly stable in total over the next five years. The CRA projections looking at elementary enrollment projections in total have proven to be fairly consistent with our projections. Unfortunately our projections by elementary building are in need of refinement due to several new residential housing developments being projected.

As CRA has shared, when the building percentage utilization exceeds 80%, classroom space can become an issue. We have been experiencing this issue specifically with the Mount Nittany Elementary School (MNE) for several years, thus the placement of 2 or 3 student classrooms in the Panorama Village Building. The MNE capacity issue, admittedly, caught us by surprise during the pandemic years while focusing on other issues.

In addition, the district did not have programs or supports requiring spaces in each building such as school psychologists or STEM. Other factors currently impacting space issues which may include increased special education, gifted, and ESL. Schools neighboring the MNE boundaries, Easterly Parkway and Spring Creek, are facing capacity issues to a larger extent than other elementary schools.

Based upon the work to date, the administration expect a recommendation for design at MNE could include the following:

1. Construction of six regular education classrooms
2. Establishing multiple small group instruction rooms
3. Relocate multiple disability classroom from Easterly Parkway along with establishing a sensory classroom to also support the autistic services located at MNE
4. Establish a separate gymnasium and cafeteria through construction and possible new kitchen
5. Establish a instrumental music classroom

This recommendation would not only alleviate space issues at MNE, but also serve as a potential solution should capacity become insufficient at Easterly Parkway and Spring Creek.

Attachment A includes a comparison of projected and actual enrollments by building along with capacity utilization. These charts are still in draft format as some of the buildings capacity has been or needs to be adjusted to reflect district-wide programs such as autistic classrooms, HEARTS, and Cen-Clear preschool services which now occupy space which were not factored into the initial capacity.

A proposed timeline for presentations and discussion with the Board, staff and the community includes:

- July 10 further analysis of building specific enrollment projections and current space allocation at all elementary buildings; analysis of residential development impact on the district
- July - August further Board discussion
- September - opportunities for staff and community input; approval by Board for design development of additions and renovations project at MNE

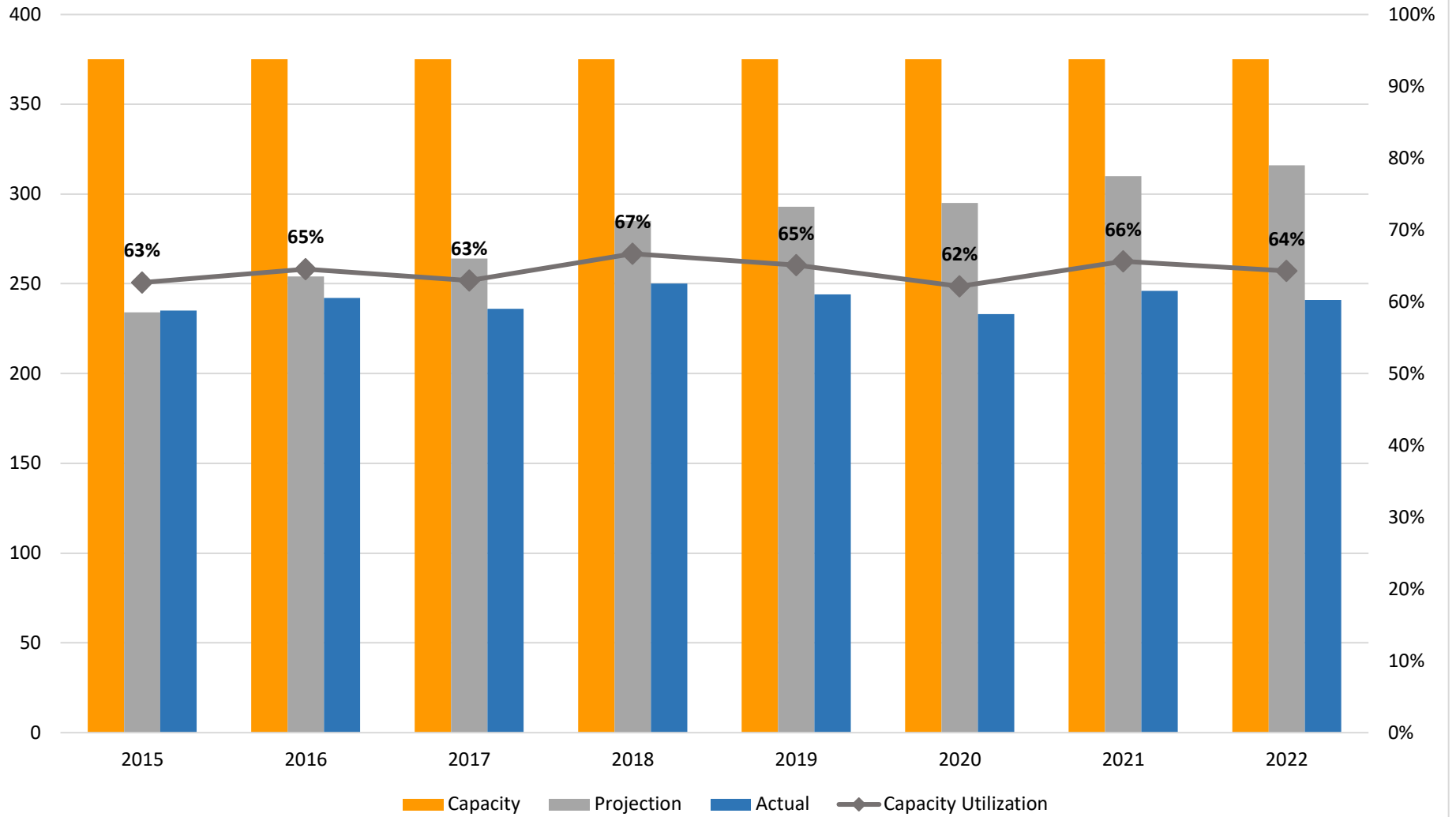
The design process is estimated to require one year with the administration, Board and community. Once a design is approved, estimated construction could take one year based upon estimates from the possible components suggested at this time.

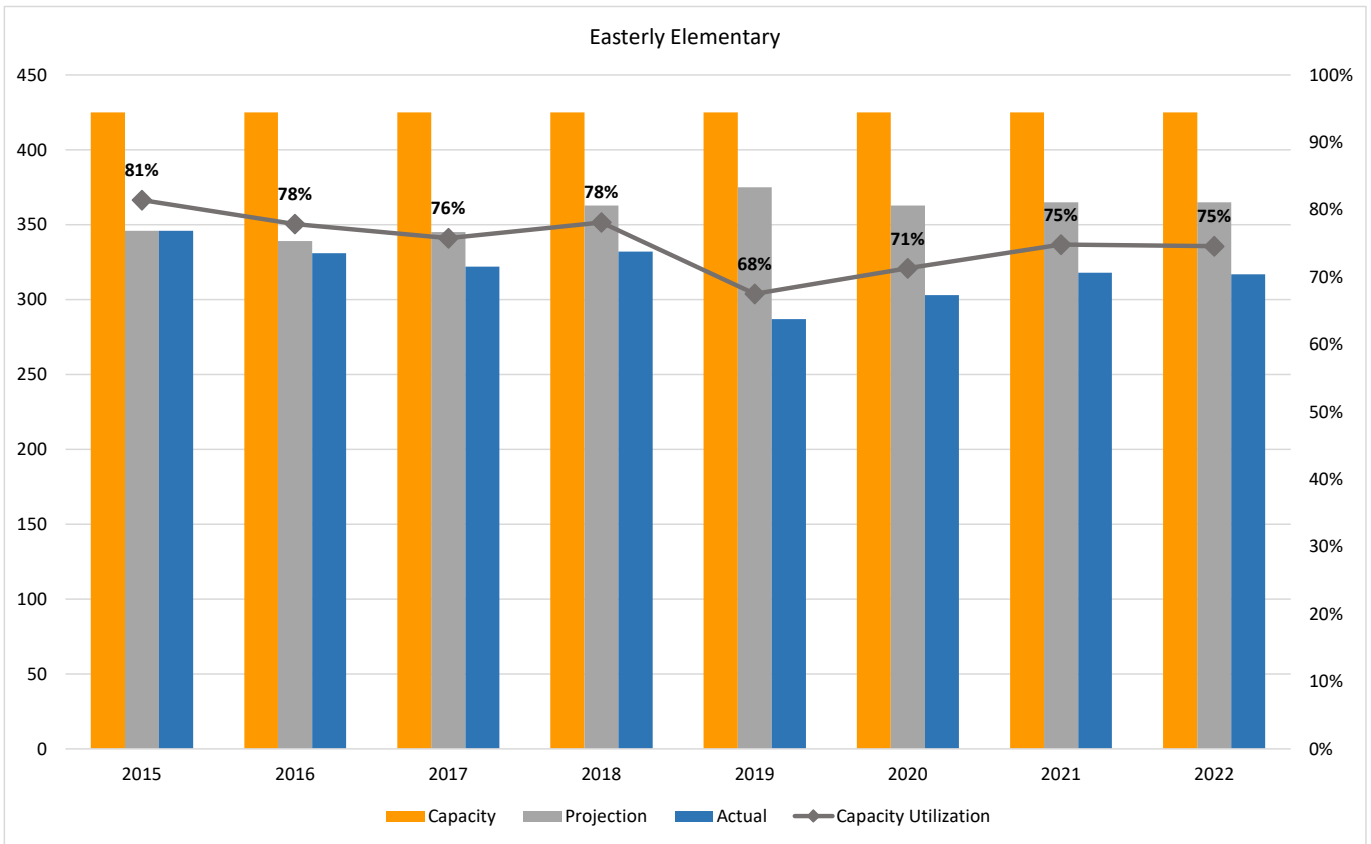
Because we do not foresee capacity issues alleviating themselves, we wanted to present our findings to-date in order to begin the necessary conversations in preparation for future planning and Board action. It is our hope to make more refined information available throughout the summer months for more informed conversations with the community in the fall.

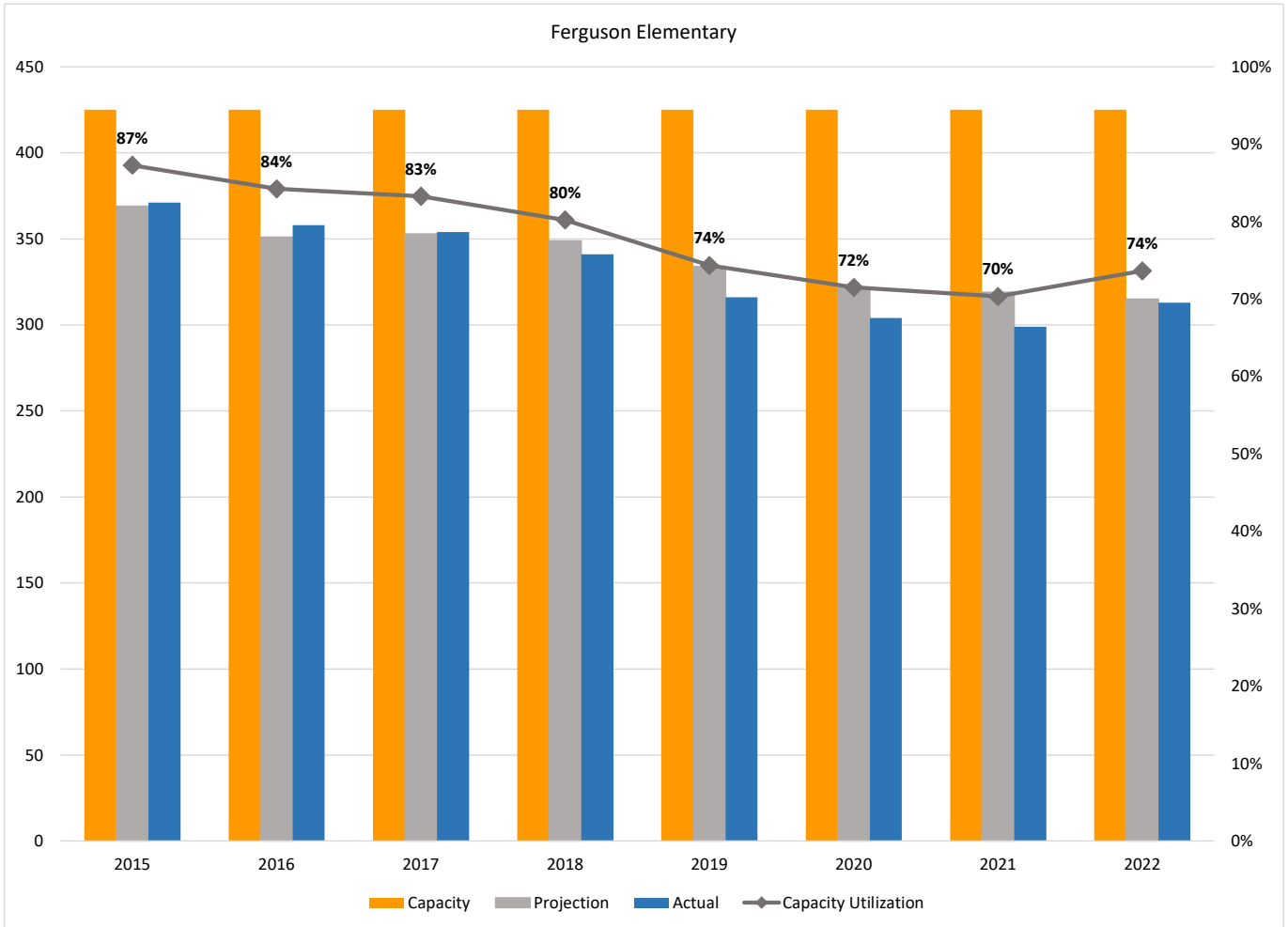
CRA representatives will be present to discuss their work and findings as well.

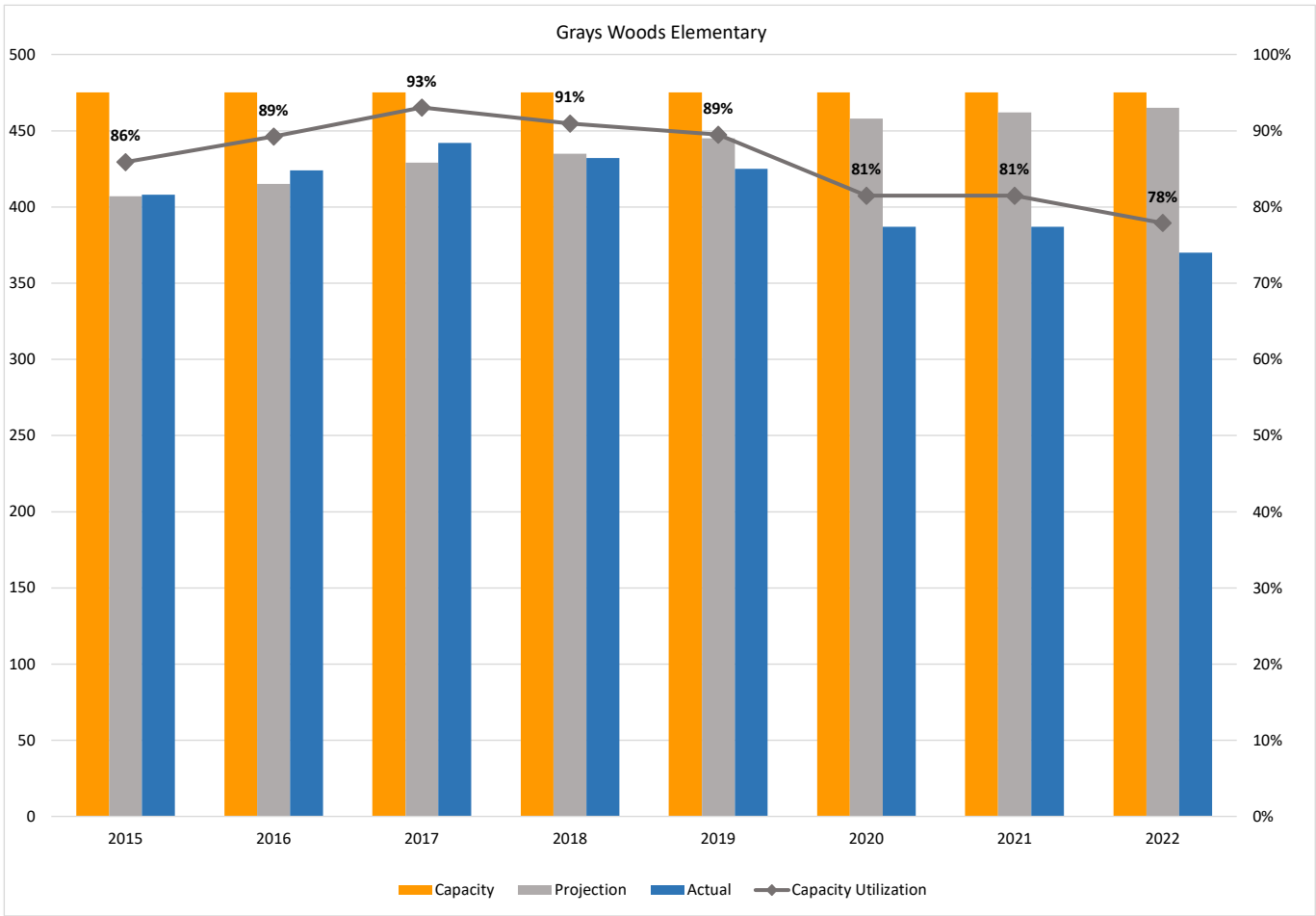
Attachment A

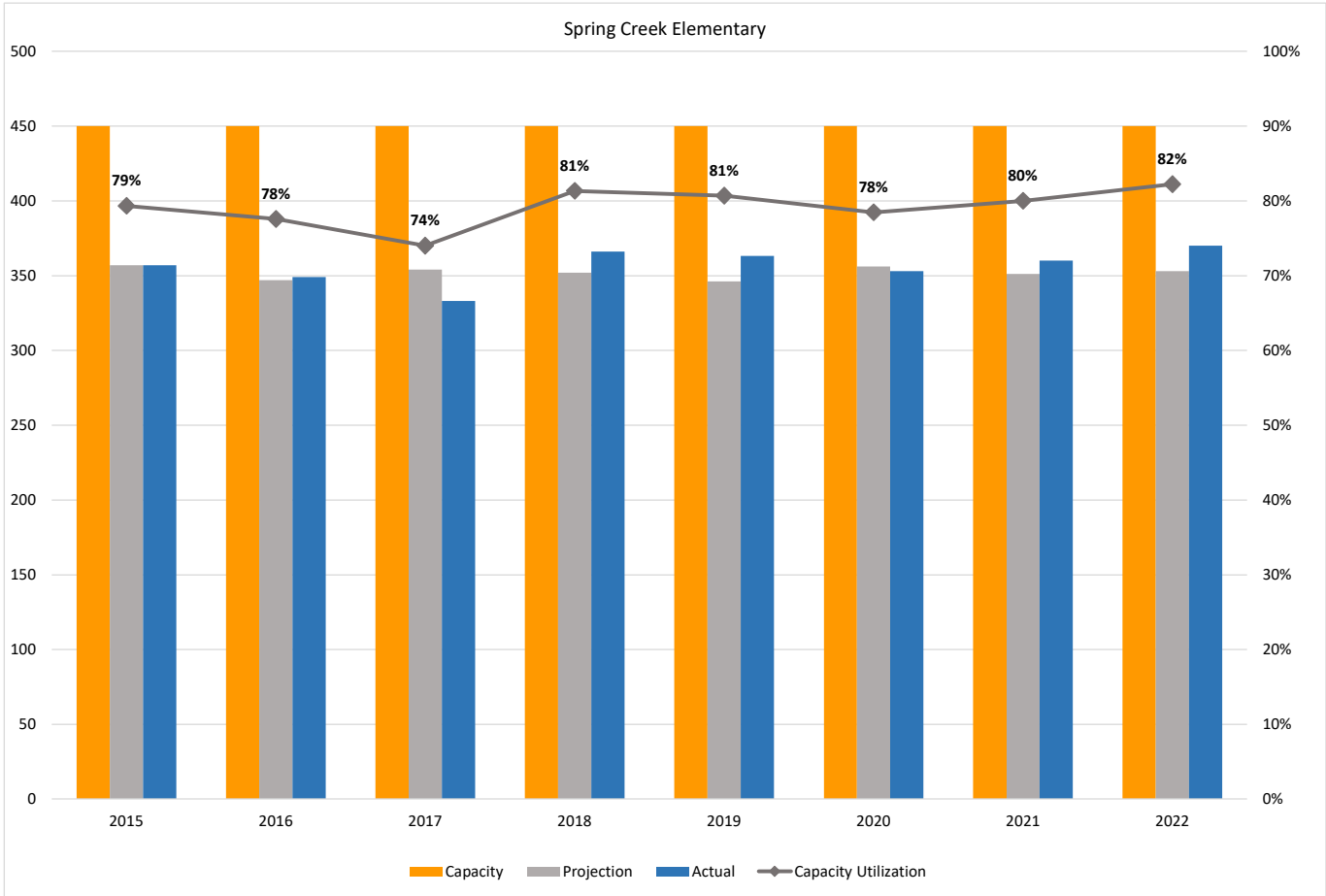
Corl Street Elementary



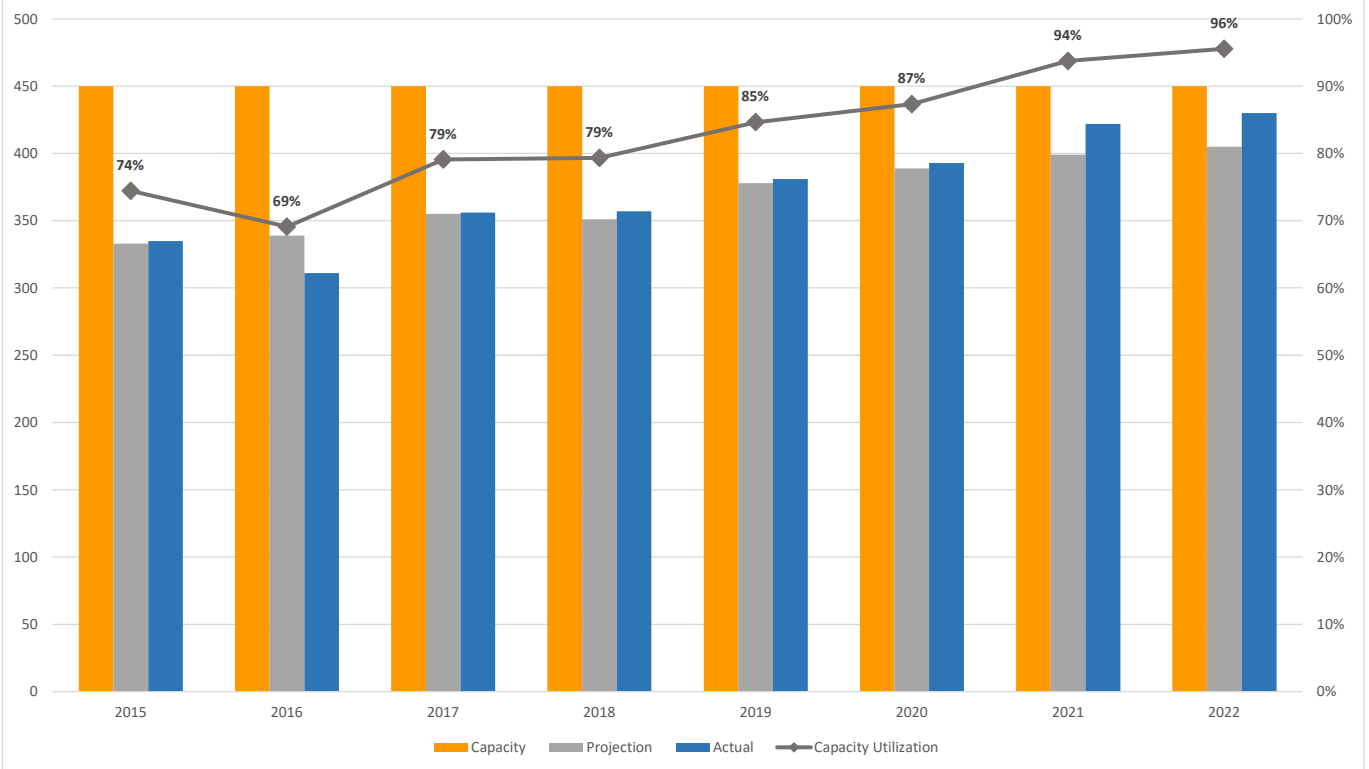


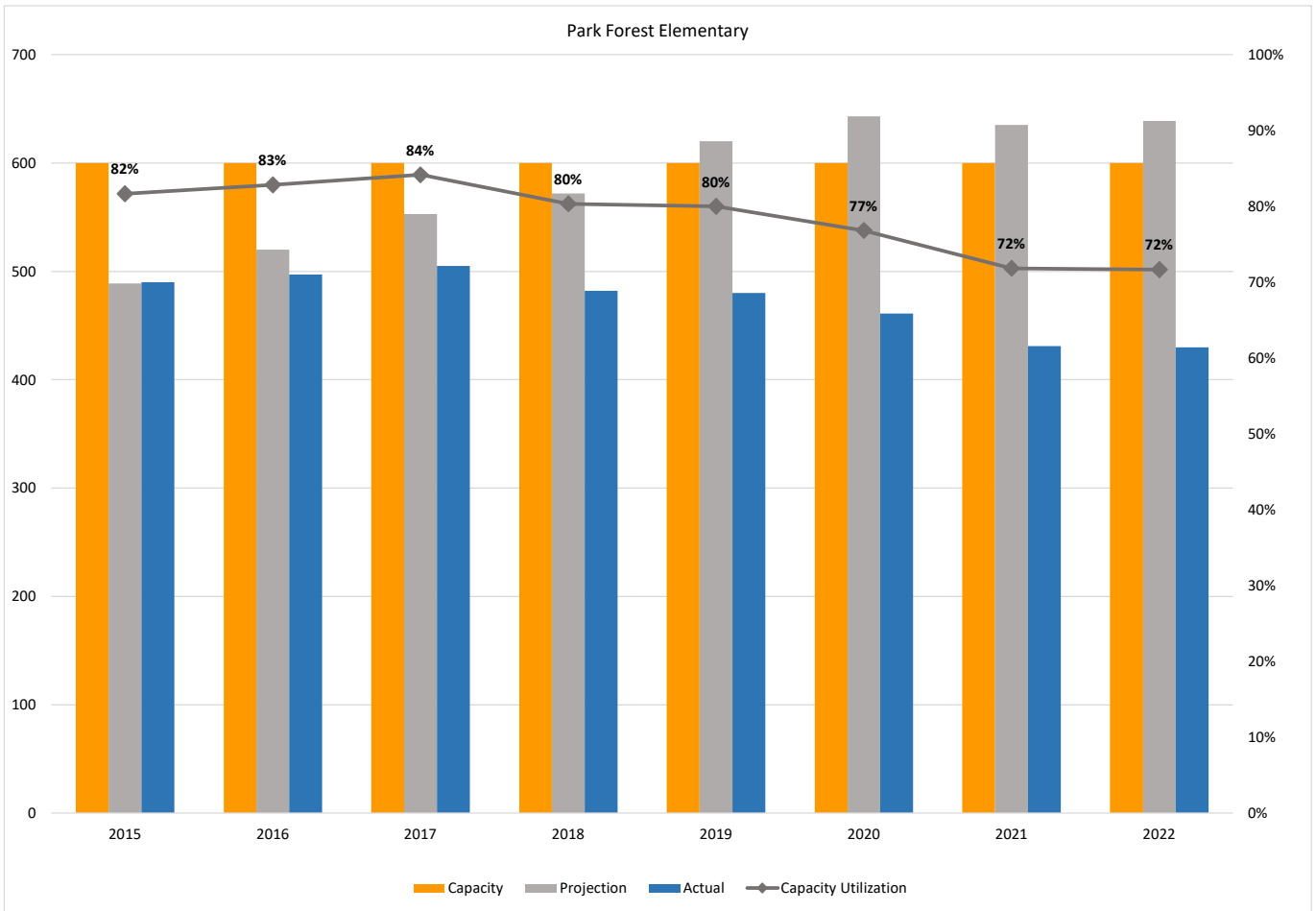


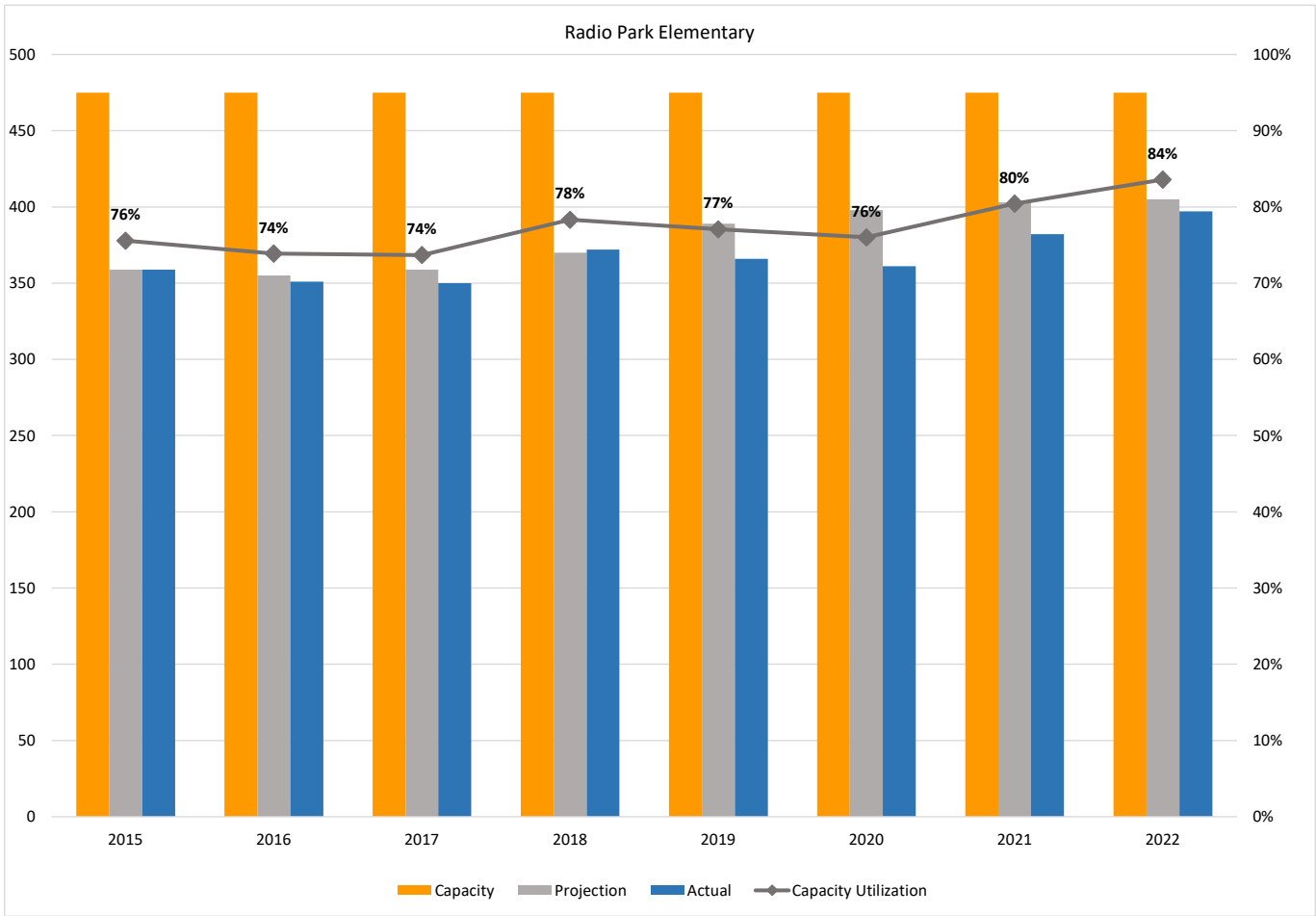




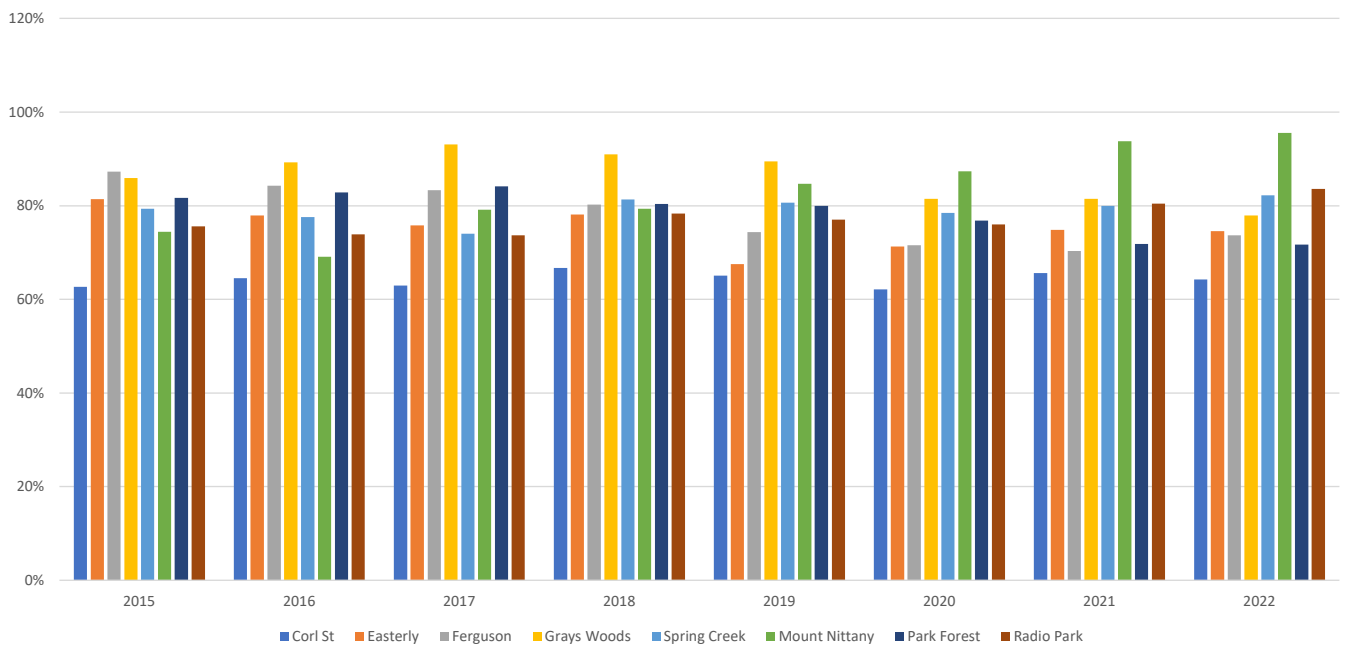
Mount Nittany Elementary







Actual Enrollment as a % of Capacity Utilization



State College Area School District



Factors impacting capacity:

- Additional special – STEM
 - School psychologist in each building
 - Student make-up/enrollment – special education, gifted, ESL
 - District-wide programs
 - HEARTS
 - special education (autistic, multiple disability)
 - Fairmount Building closure
-

Attendance Boundaries/Facilities Analysis - Elementary

Expected Recommendation – MNE

- Six regular education classrooms
 - Establish multiple small group instruction rooms
 - Relocate Multiple disability (MDS) classroom from Easterly Parkway
 - Establish sensory classroom for MDS and autistic support
 - Establish separate gymnasium and cafeteria
 - Establish instrumental music classroom
-

Attendance Boundaries/Facilities Analysis - Elementary

Benefits of MNE Project

- Ends use of Panorama for multiple classrooms
- Adds capacity at Easterly Parkway
- Provides potential capacity for Spring Creek
- Provides consistency with Policy 206

Considerations of safe student transportation and travel

Convenience of access to schools (neighborhood schools)

Attendance Boundaries/Facilities Analysis - Elementary

Timeline for presentations and discussion

- July 10: board meeting
- July and August: further board discussion
- September: staff and community input; approval to move forward with design development

Attendance Boundaries/Facilities Analysis - Elementary

Elementary focus

Other projects – Panorama Village renovations

Fairmount Building

DWFMP

Phase 1 – Instructional: focus on Park Forest middle

Phase 2 – Operational: transportation; sustainability

Phase 3 – Athletics and playground

District-wide Facilities Master Planning

State College Area School District

